

Shelly's does it by design

By DAVID CRAWSHAW

PEOPLE certainly appreciate a good building, as any architect will tell you.

When you can have a meal and a few beers in an award-winning architectural delight, you might appreciate good design even more.

One of the region's most impressive buildings, the expanded Shellharbour Workers' Club, has been named the winner of the Blacket Award for regional architecture in NSW.

The award, announced at the weekend by the Royal Australian Institute of Architects, recognises the club's redevelopment which incorporates steel, an open verandah, solar panels to supply energy, rainwater tanks capable of storing 150,000 litres for use in toilets, and a worm farm to break down organic waste.

Caroline Pidcock, whose Sydney office was awarded the award last week, and the rainwater harvesting system is delivering between 90,000 and 120,000 litres of water a month.

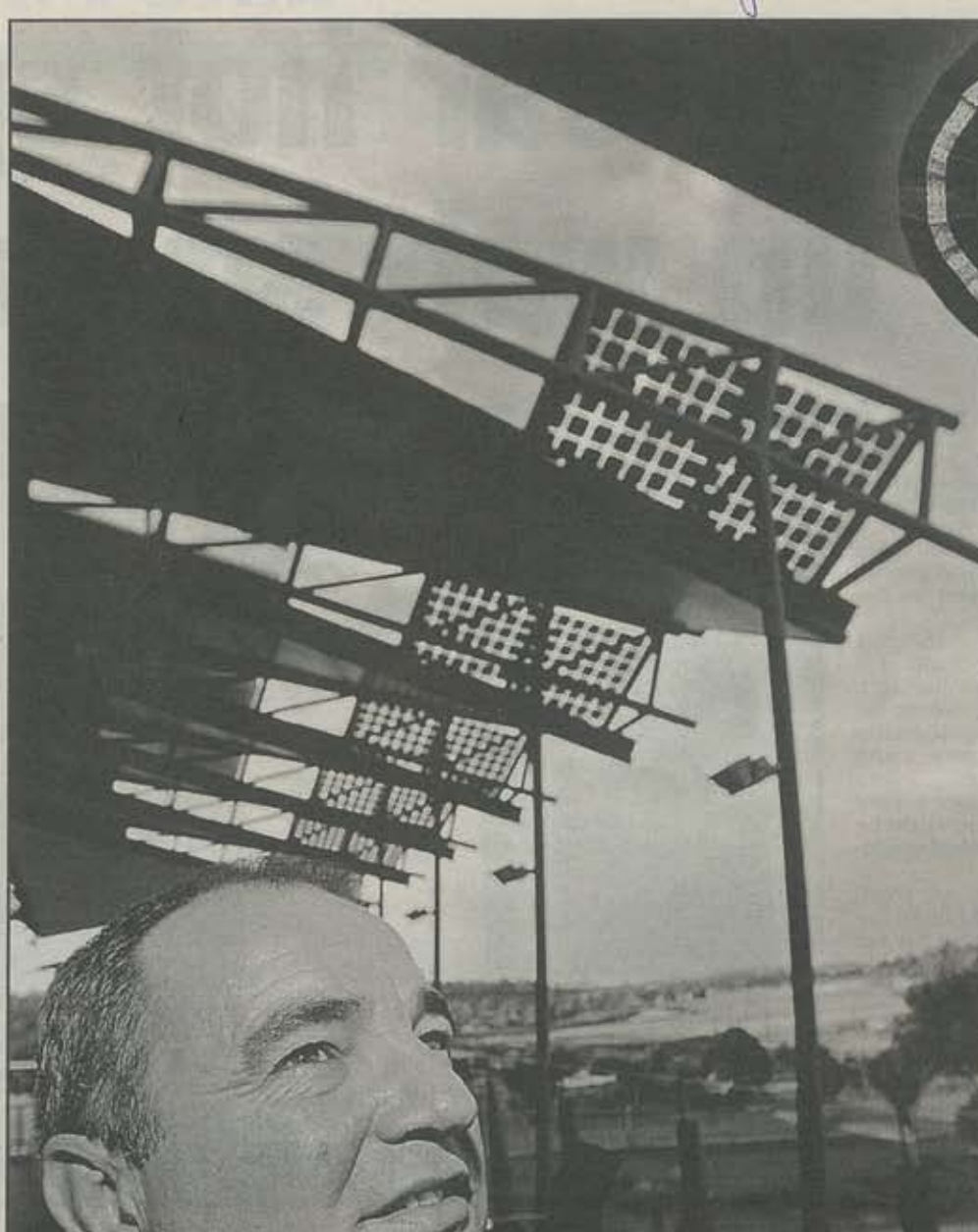
Other Illawarra projects nominated in the 2004 NSW Architecture Awards included houses in Kiama and Foxground, the Wollongong Hospital redevelopment, the new Shell Cove golf course club house, the Adecco building in Wollongong and Gerringong's Kent development.

To be eligible for an award, the building work must have been completed in the past two years.

Shellharbour Workers' Club general manager David Whyte said the stylish revamp and extension had "delivered all we'd hoped for and a bit more".

"The club's board was extremely excited by the standard of entry by Caroline and Richard in the architectural competition in early 2002," he said.

"The project has given the club a much-needed facelift, provided new facilities for



Powered: Shelly's general manager David Whyte, with solar panels above.

Picture: DAVE TEASE



WHAT THE JUDGES SAID

What the judges said about the redevelopment of Shellharbour Workers' Club:

"Through this project the local community not only benefits from robust architecture, but also gains a state-of-the-art, publicly accessible example of renewable energy generation and rainwater collection. The verandah is probably the most extensive building-integrated photovoltaic and rainwater collection

... support of this bold and innovative project."

... gives the buildings more longevity. Good quality buildings keep for longer."